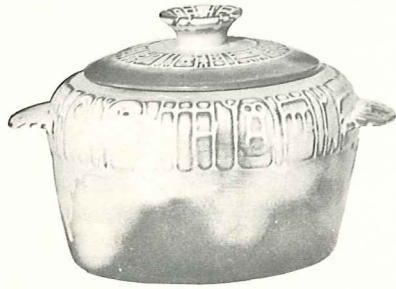




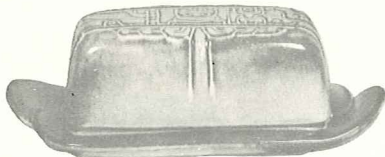
7V-2 QT. BAKER/BEAN POT—6.00  
7V/W-BAKER/W WARMER, SET—11.00



7W-3 QT. BAKER/BEAN POT—7.50  
7W/W-BAKER/W WARMER, SET—12.50



7H-SALT & PEPPER—3.00



7K-BUTTER DISH—4.00



\*7PS-9" TRAY—2.50



\*7T-6 CUP TEAPOT—6.00



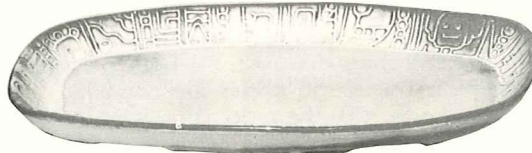
7FL-10" PLATE—3.50  
7F-9" PLATE—2.50  
7G-7" PLATE—2.00  
7E-5" SAUCER—1.50



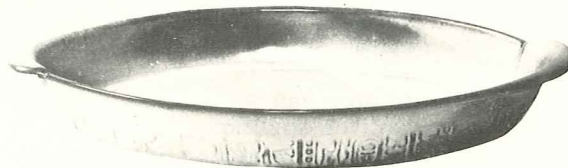
7B-SUGAR WITH LID—3.00  
7AB-CREAM & SUGAR SET—5.00



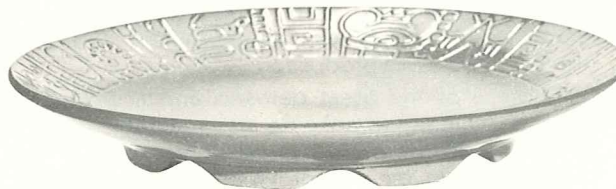
7A-6 OZ. CREAMER—2.00



7QS-13" STEAK PLATTER (SHALLOW PLATTER)—3.50



7Q-13" DEEP PLATTER—6.00



7FC-15" CHOP PLATE—15.00



7TP-17" AZTEC OVAL PLATTER—12.50



\*7D-2 QT. PITCHER—6.00



7C-CUP—2.00



\*7M-14 OZ. MUG—3.00



7XO-8 OZ. FRUIT—1.50



\*7C-4-12 OZ. COFFEE MUG—2.00



7X-14 OZ. CHILI-SOUP—2.00



7XL-20 OZ. SALAD—2.50



7N-1 QT. VEGETABLE BOWL—3.00



\*7J-2 CUP TEAPOT—4.00

THIS PAGE AVAILABLE IN PRAIRIE GREEN, DESERT GOLD, WHITE SAND AND WOODLAND MOSS.

\*AVAILABLE IN ALL COLORS — ADD 50% FOR FLAME.

SIZES ARE APPROXIMATE AND MAY VARY SLIGHTLY.